

## Service - PDI - Post Service Inspection (Hank) -

HOP081574

Complete

Score	17 / 18 (94.44%)	Flagged items	0	Actions	0
-------	------------------	---------------	---	---------	---

Date of inspection

07/21/2023

Site conducted

Unanswered

ALL Machine Serial #'s (Compressor, Engine and Trailer)

HOP081574

Compressor: HOP081574  
 Engine: PE6068U045334  
 Trailer:NA

### Take Pictures of Compressor data plate



Photo 1

Aftercooled?

No

Water Separator?

Yes

### Take Picture of Engine data plate



Photo 2

Engine Tier?

4

### Take Picture of Engine Emission Tag



Photo 3

**Take Picture of Trailer data plate**

NA



Photo 4



Photo 5

**Take Picture of controller turned on showing hours**

2747



Photo 6

**Location**

4484C Genoa Red Bluff Rd  
Houston TX 77505  
United States  
(29.63289341374863,  
-95.12620086378821)

**Any damage to outside machine?**

Pass

**Take Photo of front of unit**



Photo 7

**Take photo of drivers side profile**



Photo 8



Photo 9



Photo 10

**Take photo of drivers side profile with doors open**



Photo 11

**Take photo of rear of unit**



Photo 12

**Take photo of passenger side profile**



Photo 13



Photo 14

**Take photo of passenger side profile with doors open**



Photo 15

**Photos of door latches and handles - do they work/were they replaced?**

Yes

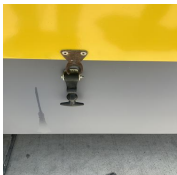


Photo 16

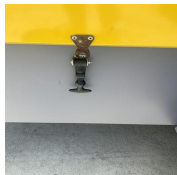


Photo 17

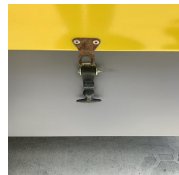


Photo 18

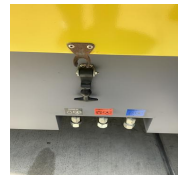


Photo 19

**IF NO PAINT - please ensure any residual sticker residue is removed**

Yes

**Any leaks present?**

Pass

**Does machine start & Run ok?**

Yes

**Test ran for 1 hour if under 750 cfm? Test ran for 3 hours if over 750 cfm?**

Yes

**Take photos of element**



Photo 20



Photo 21

**Take photos of cooler and fan drive**



Photo 22



Photo 23

**Take photos of undercarriage**

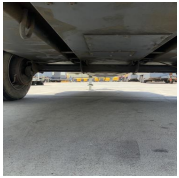


Photo 24



Photo 25

**Take photos of engine**

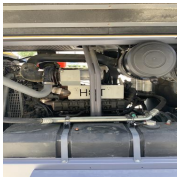



Photo 26



Photo 27

<b>Inspect all tank caps (Fuel, DEF, Coolant, etc...)</b>	Yes
<b>Radiator/coolers and top tank in good condition?</b>	Yes
<b>1000 Hour Service Completed</b>	Yes
<b>Oil Stop Valve Rebuilt</b>	Yes
<b>Unload Valve Rebuilt</b>	Yes
<b>Hours recorded on filters from service?</b>	Yes
<b>Service timers reset?</b>	Yes
<b>Controller inspected and functioning properly?</b>	Yes
<b>Battery replaced?</b>	Yes
<b>Battery tie downs in place?</b>	Yes
<b>All harnesses secured?</b>	Yes
<b>Belts replaced, fan, pulley inspected?</b>	Yes
<b>Brakes checked and functioning?</b>	Yes

<b>All Trailer Lights Functioning?</b>	Yes
<b>Wheel bearings greased and no rust?</b>	Yes
<b>Are Hitch and Safety Chains Operational and/or in good shape?</b>	Yes
<b>Jack straightened and welds in good shape?</b>	Yes
	
Photo 28	
<b>Tires within DOT Spec?</b>	Yes
<b>No open Service Bulletins?</b>	Yes
<b>Is outbound OK to book in TMS?</b>	NA
<b>Service center completing?</b>	LaPorte

**Prepared by**



GRANT  
21 Jul 2023 14:38 EDT

### Video Walkaround during unit test run

NA



Photo 29

## Media summary



Photo 1



Photo 2



Photo 3



Photo 4





Photo 5



Photo 6



Photo 7



Photo 8



Photo 9



Photo 10



Photo 11



Photo 12





Photo 13



Photo 14



Photo 15



Photo 16

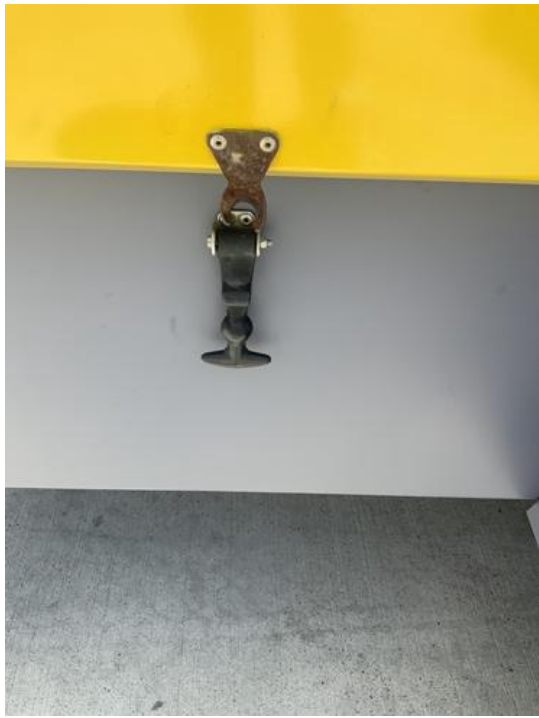


Photo 17



Photo 18



Photo 19



Photo 20



Photo 21



Photo 22



Photo 23

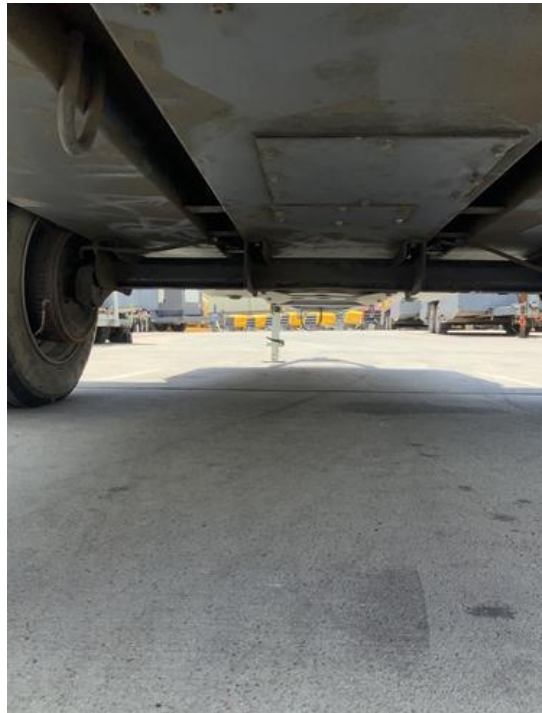


Photo 24





Photo 25



Photo 26



Photo 27



Photo 28





Photo 29